

# MAPLE MANOR

2779 MAPLE STREET, ABBOTSFORD, BC



## 21-Suite Abbotsford Rental Apartment Building Investment Opportunity

### PROPERTY PROFILE

■ CIVIC ADDRESS:	2779 Maple Street, Abbotsford, BC
■ PROPERTY TYPE:	Multi Family Apartment - 3 Stys
■ LOCATION:	Located on Maple Street inbetween Walnut Avenue and Elm Street
■ PROPERTY ID:	007-440-910 007-440-901
■ SITE SIZE:	14,230 SF (approximately)
■ SUITES:	21
■ SUITE BREAKDOWN:	7 One Bedroom & 14 Two Bedroom
■ YEAR BUILT:	1973
■ ZONING:	RML - Low Rise Apartment
■ PARKING:	26 surface spaces

FOR MORE  
INFORMATION  
PLEASE  
CONTACT

**Lance Coulson**  
Personal Real Estate Corporation  
Executive Vice President  
National Apartment Group  
604 662 5141  
lance.coulson@cbre.com

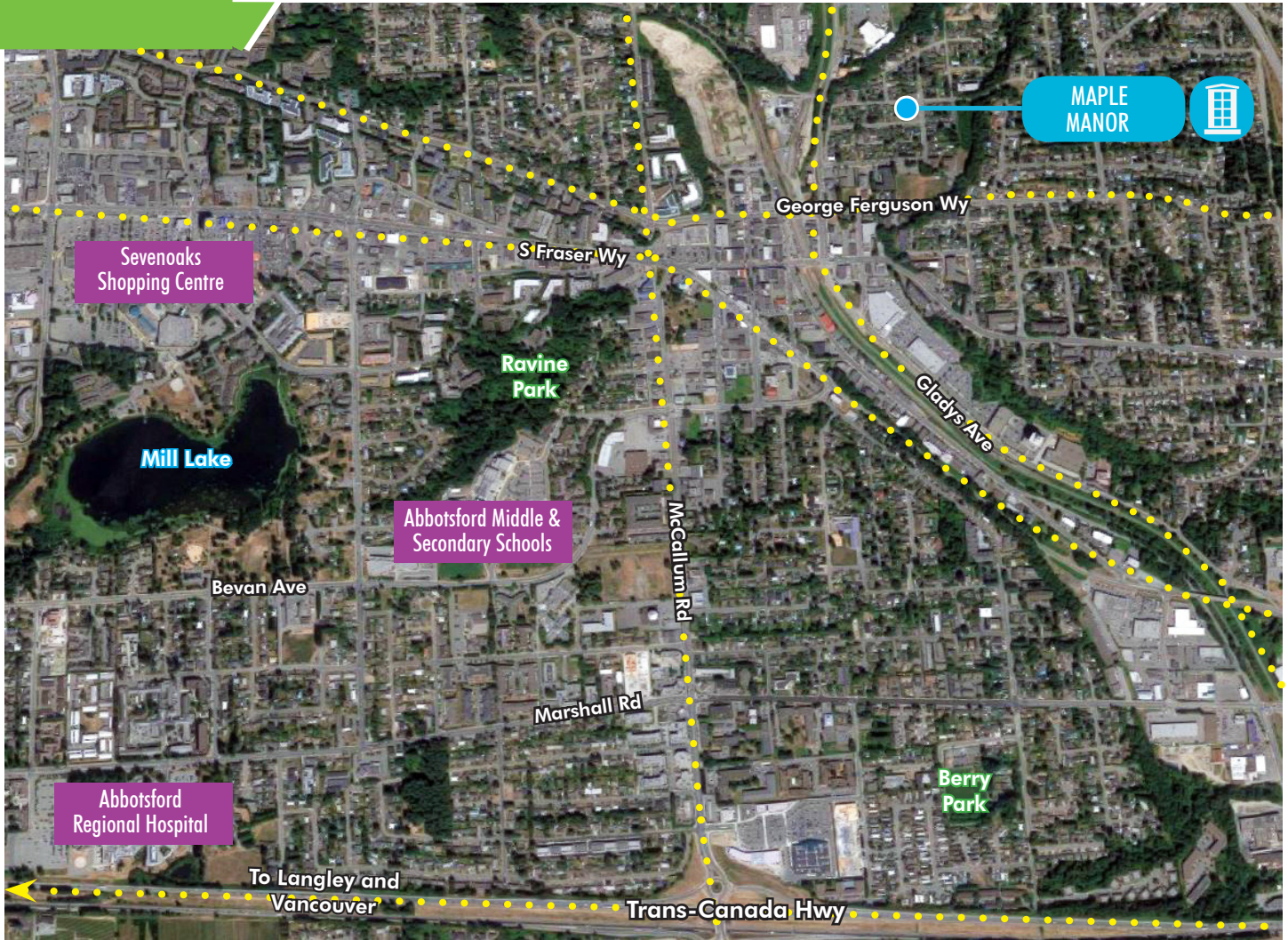
**Greg Ambrose**  
Senior Sales Associate  
National Apartment Group  
604 662 5178  
greg.ambrose@cbre.com

**CBRE**

# PROPERTY INFO SHEET

# MAPLE MANOR

2779 MAPLE STREET, ABBOTSFORD, BC



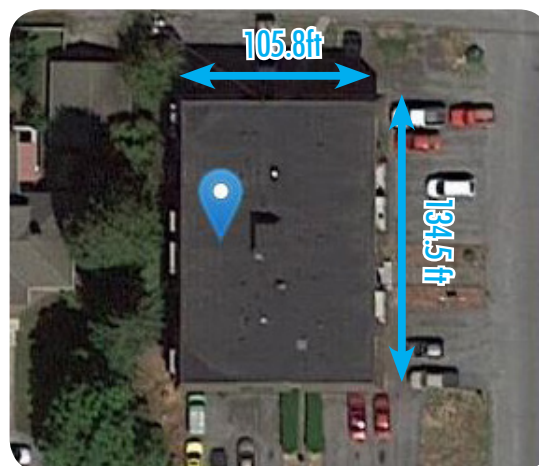
**FOR MORE  
INFORMATION  
PLEASE  
CONTACT**

**Lance Coulson**  
Personal Real Estate  
Corporation

Executive Vice President  
National Apartment Group  
604 662 5141  
lance.coulson@cbre.com

**Greg Ambrose**

Senior Sales Associate  
National Apartment Group  
604 662 5178  
greg.ambrose@cbre.com



CBRE Limited | 1021 West Hastings Street | Suite 2500 | Vancouver, BC V6E 2E9 | www.cbre.ca

This disclaimer shall apply to CBRE Limited, Real Estate Brokerage, and to all other divisions of the Corporation; to include all employees and independent contractors ("CBRE"). The information set out herein, including, without limitation, any projections, images, opinions, assumptions and estimates obtained from third parties (the "Information") has not been verified by CBRE, and CBRE does not represent, warrant or guarantee the accuracy, correctness and completeness of the Information. CBRE does not accept or assume any responsibility or liability, direct or consequential, for the Information or the recipient's reliance upon the Information. The recipient of the Information should take such steps as the recipient may deem necessary to verify the Information prior to placing any reliance upon the Information. The Information may change and any property described in the Information may be withdrawn from the market at any time without notice or obligation to the recipient from CBRE. CBRE and the CBRE logo are the service marks of CBRE Limited and/or its affiliated or related companies in other countries. All other marks displayed on this document are the property of their respective owners. All Rights Reserved. Mapping Sources: Canadian Mapping Services canadamapping@cbre.com; DMTI Spatial, Environics Analytics, Microsoft Bing, Google Earth.

# CBRE